



Project Name:

Location:

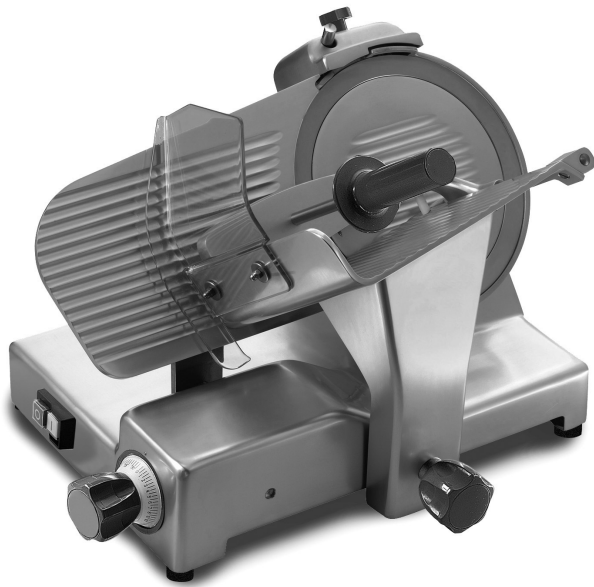
Item:

Qty.:

Model:

GSQ10/12

Heavy Duty Commercial Slicers



GSQ10/12
Heavy Duty Slicers

FEATURE LIST		
Model:	GSQ10	GSQ12
Description:	10" /254mm Heavy Duty Slicer	12"/305mm Heavy Duty Slicer
Voltage:	120/60/1	120/60/1
Rated Power:	1/3 Hp	1/3 Hp
Hopper	9.5" x 9" 241mm x 229mm	9.5" x 9" 241mm x 229mm
Cut Thickness:	1 1/8" 28.5mm	1 1/8" 28.5mm
Net Weight:	54 lb 24.5 kg	54 lb 24.5 kg
Shipping Weight:	66 lb 30 kg	66 lb 30 kg
Dimensions:	32"W x 24"D x 21"H 810mm W x 610mm D x 530mm H	32"W x 24"D x 21"H 810mm W x 610mm D x 530mm H

For over 30 years, the General brand of slicers provided value and performance to the commercial foodservice industry with innovative and affordable meat slicing machines! The all NEW "GSQ" series adds another level of performance, safety and quality to the General lineup of medium to heavier duty use slicers with peak efficiency and unparalleled results. Our "GSQ" series feature a stainless steel ground and polished slide rod with self lubricating bushings, resulting in one of the smoothest operating slicing machines in the industry. Safety features are the most important aspect of any slicer, and the "GSQ" series of slicers comes standard with all safety requirements. For its incredible performance capabilities combined with its affordable pricing, the "GSQ" series provides the best investment for the value conscious end user!



Specifications subject to change without notice.

Approvals:



GENERAL

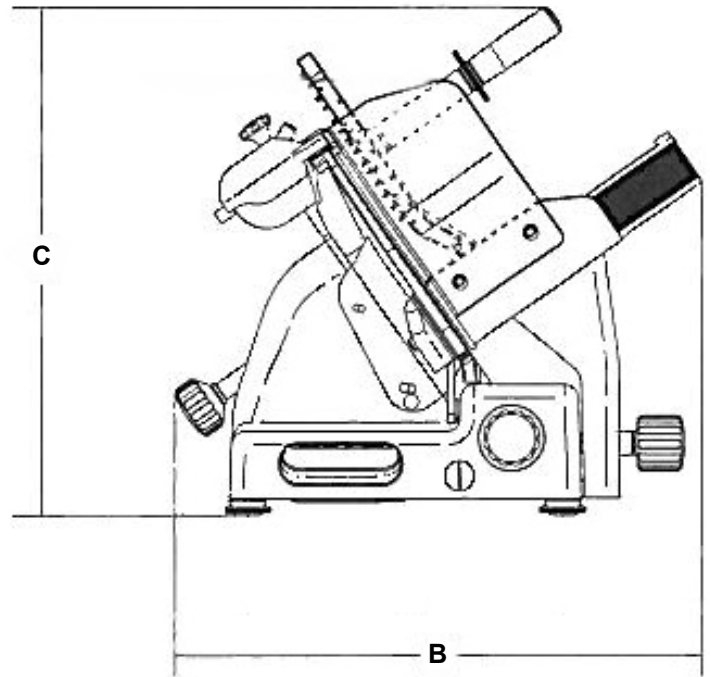
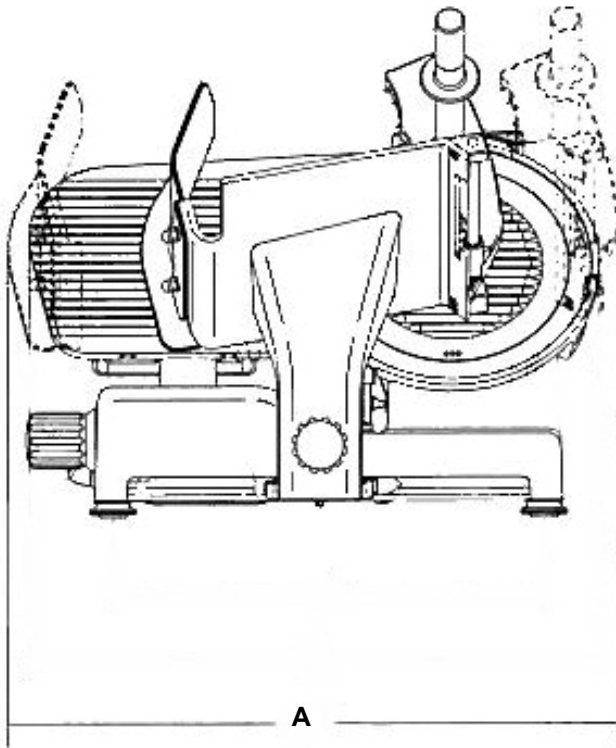
3355 Enterprise Ave • Suite 160 • Ft. Lauderdale, FL 33331
Tel: 954.202.7419 • Fax: 954.202.7337 • www.asburyfoodservice.com
General's continuing commitment to quality products may mean a change in specification or pricing without notice.



GSQ10/12

PLAN VIEW

Heavy Duty Commercial Slicers



Dimensional Data

Model	Description	Hopper	Power	A = Width	B = Depth	C = Height
GSQ10	10" /254mm Heavy Duty Slicer	9.5" x 9"	1/3 Hp	32" 810mm	24" 610mm	21" 530mm
GSQ12	12" /305mm Heavy Duty Slicer	241mm x 229mm				

- 12"/300mm chrome plated high carbon hollow ground steel knife
- Rounded design with no sharp edges
- Anodized exterior finish
- 1/3 hp motor, 120 volts, 60Hz, 1 pH
- Enclosed and sealed high torque belt & pulley drive system
- Stainless steel slice deflector w/ bayonet fitting
- Chrome plated slide rod with self lubricating slide rod bushings
- Bottom cover
- Removable support cover for slice thickness gauge plate
- Built in and enclosed top mount sharpener system
- Blue plastic knobs and handles
- Full knife rim guard

- Pushbutton and covered start/stop switch with IP44 protection
- Safety interlock system for carriage, locks regulator plate & thickness knob
- Special rounded plexi hand guard following shape of regulator plate
- All stainless steel screws and fittings



GENERAL

3355 Enterprise Ave • Suite 160 • Ft. Lauderdale, FL 33331
 Tel: 954.202.7419 • Fax: 954.202.7337 • www.asburyfoodservice.com
 General's continuing commitment to quality products may mean a change in specification or pricing without notice.